

产品介绍
INTRODUCTION



- 三相交流电源滤波器 Three-phase AC filters
- 多种出线方式可供选择 Multiple connection to choose from
- 含共模线圈 With common mode coil
- 大电流滤波器 High current filter

产品特点
FEATURE

- CW6B- * A-S 螺丝固定螺栓出线滤波器 Screw bolt connection filter by screw fixed
- CW6B- * A-R 螺丝固定欧式端子出线滤波器 European style terminal block filter by screw fixe
- CW7B- * A-R 螺丝固定端子排出线滤波器 Terminal block connection filter by screw fixed
- CW8BL2- * A-S 螺丝固定螺栓出线滤波器 Screw bolt connection filter by screw fixed
- YS70M2BS- * A 螺丝固定螺栓出线滤波器 Screw bolt connection filter by screw fixed

应用范围
APPLICATION

- 电子电气设备 Electrical and Electronic Equipment
- 消费电子 Consumer Electronic Production
- 机械设备 Mechanical equipment
- 医疗设备 Medical Equipment
- 数据通讯设备 Data Communication
- 三相工业设备 Three-phase industrial equipment
- 办公自动化设备 Office Automation Equipment
- 变频器 Frequency converter
- 各类电力设备 Power equipment of all kinds

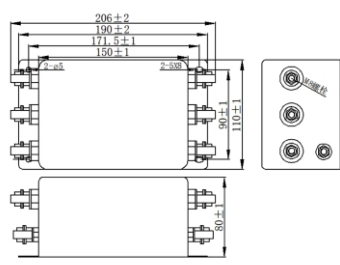
技术参数
TECHNICAL DATA

- 额定电压 / Rated Voltage : 115/250/380/480V AC
- 额定电流 / Rated Current : 40-1000A
- 测试电压 / Working Frequency : 1500V DC(Line to Line) 2000V AC(Line to Ground)
- 工作频率 / Working Frequency : 50/60Hz
- 气候类型 / Climatic Category : 25/85/21

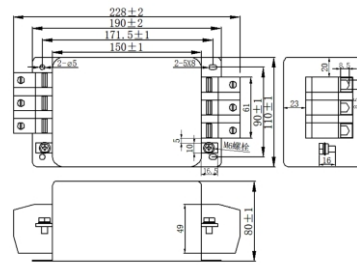
产品列表
LIST

产品型号 Part No.	额定电流(A) Rate Current	泄露电流(mA) Leakage Current @250VAC 50Hz	电路图 Schematics	外形尺寸 Dimension	出线方式 Connection	安装方式 Installation	重量 (g) Weigh	安规认证 Certification
CW6B-*A-S	40-100	< 2.1	B10	A26		螺丝 Screw	2600	CE RoHS
CW6B-*A-R	40-85	< 2.1	B10	A30		螺丝 Screw	2550	CE RoHS
CW6B-*A-R	90-115	< 2.1	B10	A27		螺丝 Screw	2700	CE RoHS
CW7B-*A-R	120-240	< 2.1	B12	A41		螺丝 Screw	4100	CE RoHS
CW8BL2-*A-S	250-500	< 2.1	B25	A44		螺丝 Screw	8700	CE RoHS
YS70M2BS-*A	600-1000	< 2.1	B25	A52		螺丝 Screw	16000	CE RoHS

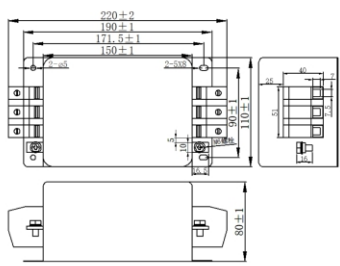
外形尺寸(mm)
DIMENSION



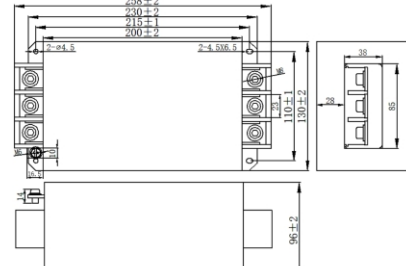
A26



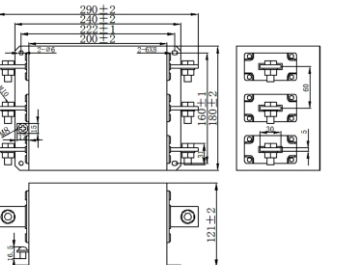
A27



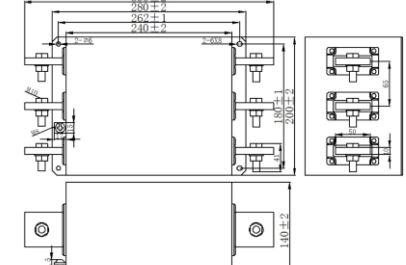
A30



A41

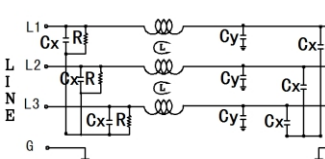


A44

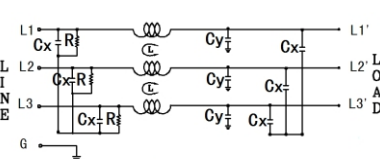


A52

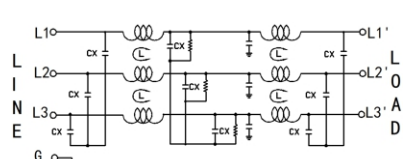
电路图
SCHEMATICS



B10



B12



B25

专业电源滤波器制造商
Professional power filters from manufacturer