

产品介绍
INTRODUCTION



- 三相三线交流输出型电源滤波器 Three-phase three line AC output filters
- 主要用于变频器输出端 Mainly used for the output terminal of frequency
- 含共模和差模线圈 With common mode coil and differential mode coil
- 3A-1000A多种电流可选 3A-1000A Multiple Current Options

产品特点
FEATURE

- YS76M3GR-+A 小电流三极输出型滤波器 Low current three pole output filter
- YS74M2GR-+A 90~240A大电流双极输出型滤波器 90A~240A High current bipolar output filter
- YS70M2GS-+A 600~1000A超大电流双极输出型滤波器 600A~1000A Super high current bipolar output filter
- YS91M2GR-+A 40~80A大电流双极输出型滤波器 40A~80A High current bipolar output filter
- YS75M2GS-+A 250A~500A超大电流双极输出型滤波器 250A~500A Super high current bipolar output filter

应用范围
APPLICATION

- 变频器 frequency changer/inverter
- 变频电源 variable-frequency power sources
- 伺服电机 actuating motor
- 各类变频原理设备 All kinds of frequency conversion principle equipment

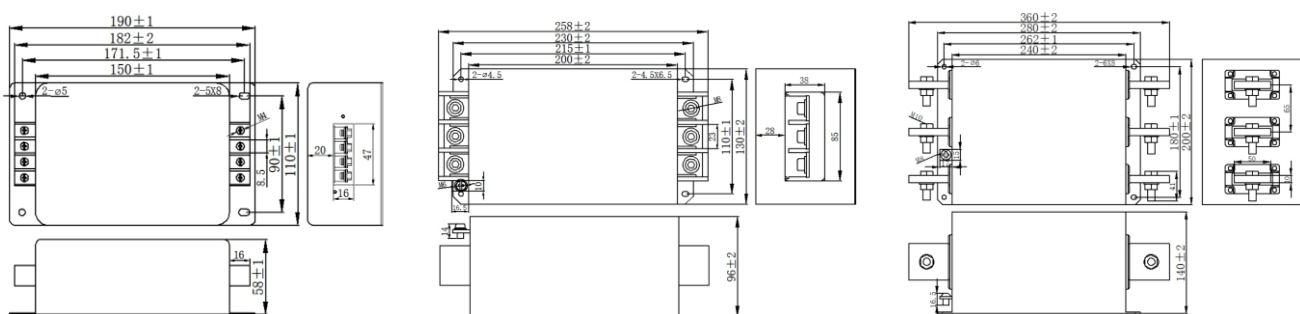
技术参数
TECHNICAL DATA

- 额定电压/ Rated Voltage: 115/250/380/480V AC
- 额定电流/ Rated Current: 3-1000A
- 测试电压/ Working Frequency: 1500VDC (Line to Line) 2000V AC(Line to Ground)
- 工作频率/ Working Frequency: 50/60Hz
- 气候类型/ Climatic Cztegoty: 25/85/21

产品列表
LIST

产品型号 Part No.	额定电流(A) Rate Current	泄露电流(mA) Leakage Current @250VAC 50Hz	电路图 Schematics	外形尺寸 Dimension	出线方式 Connection	安装方式 Installation	重量 (g) Weigh	安规认证 Certification
YS76M3GR-+A	3/6/10/20/30	< 2.05	B28	A29		螺丝 Screw	2000	CE RoHS
YS91M2GR-+A	40/50/60/70/80	< 2.05	B29	A51		螺丝 Screw	2800	CE RoHS
YS74M2GR-+A	90 ~ 240	< 2.05	B29	A41		螺丝 Screw	3900	CE RoHS
YS75M2GS-+A	250 ~ 500	< 2.05	B30	A44		螺丝 Screw	8200	CE RoHS
YS70M2GS-+A	600 ~ 1000	< 2.05	B30	A52		螺丝 Screw	16000	CE RoHS

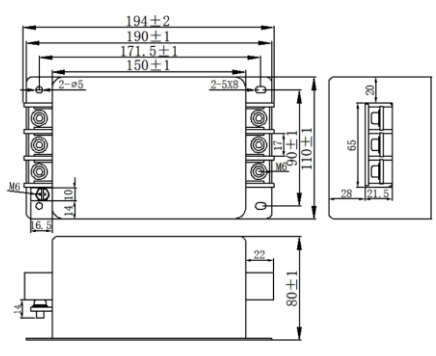
外形尺寸(mm)
DIMENSION



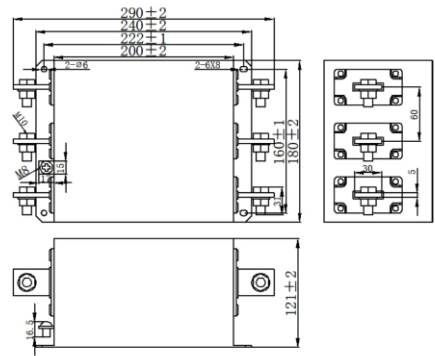
A29

A41

A44

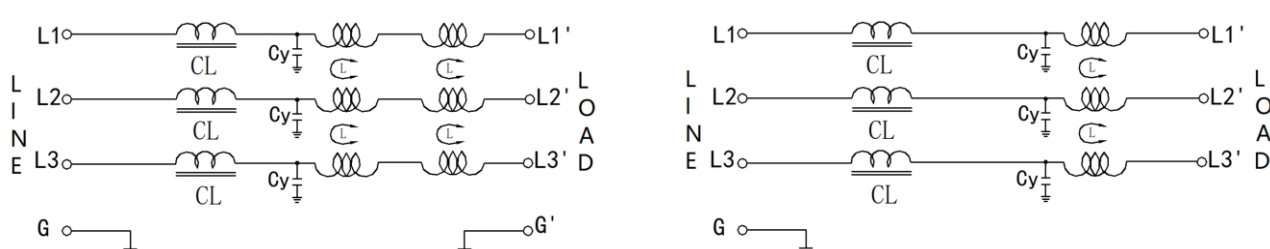


A51



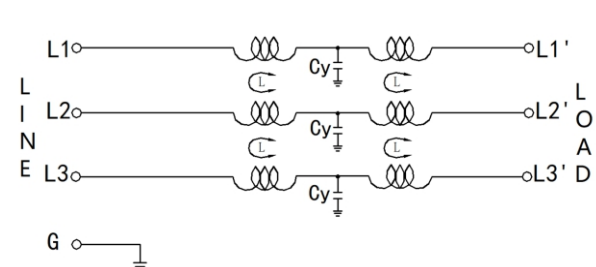
A52

电路图
SCHEMATICS



B28

B29



B30