

产品介绍
INTRODUCTION



CW4-*A-S



CW4-*A-T



CW4L2-*A-S



CW4L2-*A-T

- 单相交流电源滤波器
Single Phase AC Filters
- 含共模线圈
With common mode coil
- 单双极可供选择
Unipolar and bipolar can be choose
- 250端子/螺栓可快速连接
250 Terminal/screw bolt can quick connect

产品特点
FEATURE

- CW4-*A-T 插片式单极滤波器
Unipolar filter with terminal
- CW4L2-*A-T 插片式双极滤波器
Bipolar filter with terminal
- CW4-*A-S 螺栓式单极滤波器
Unipolar filter with screw bolt
- CW4L2-*A-S 螺栓式双极滤波器
Bipolar filter with screw bolt

应用范围
APPLICATION

- 电子电气设备
Electrical and Electronic Equipment
- 医疗设备
Medical Equipment
- 办公自动化设备
Office Automation Equipment
- 消费电子
Consumer Electronic Production
- 数据通讯设备
Data Communication
- 其他电源产品等
Other Power Production...

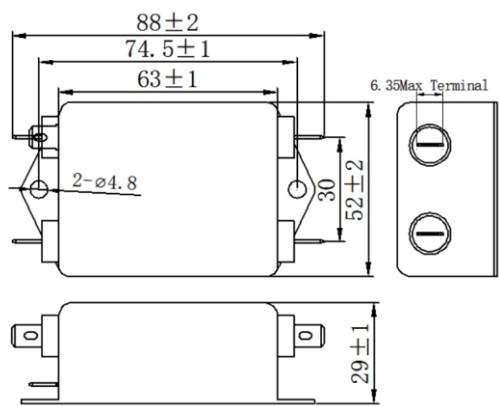
技术参数
TECHNICAL DATA

- 额定电压 / Rated Voltage : 115/250V AC
- 工作频率 / Working Frequency : 50/60Hz
- 额定电流 / Rated Current : 1-20A
- 气候类型 / Climatic Category : 25/85/21
- 测试电压 / Working Frequency : 1500V DC(Line to Line) 2000V AC(Line to Ground)

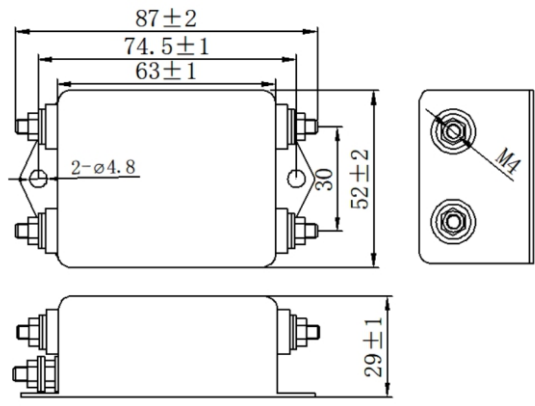
产品列表
LIST

产品型号 Part No.	额定电流(A) Rate Current	泄露电流(mA) Leakage Current @250VAC 50Hz	电路图 Schematics	外形尺寸 Dimension	出线方式 Connection	安装方式 Installation	重量 (g) Weigh	安规认证 Certification
CW4-*A-S	3/6/10/20	<0.5	B7	A14		螺丝 Screw	194	RoHS CE CQC
CW4L2-*A-S	3/6/10/20	<0.5	B8	A14		螺丝 Screw	209	RoHS CQC TUV CE
CW4-*A-T	3/6/10/20	<0.5	B7	A13		螺丝 Screw	174	RoHS CE CQC
CW4L2-*A-T	3/6/10/20	<0.5	B8	A13		螺丝 Screw	182	RoHS CQC TUV CE

外形尺寸(mm)
DIMENSION

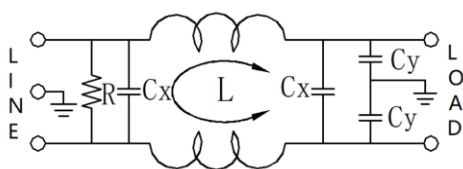


A13

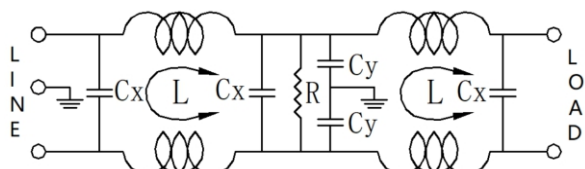


A14

电路图
SCHEMATICS



B7



B8

专业电源滤波器制造商

Professional power filters from manufacturer