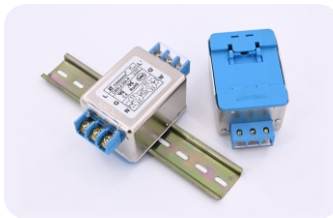


产品介绍  
INTRODUCTION



CW4-\*A-S(004)



CW4L2-\*A-R



CW4L2-\*A-R1



CW4L2-\*A-S(004)

- 单相交流电源滤波器 Single Phase AC Filters
- 含共模线圈 With common mode coil
- 端子排连接安全快捷 Terminal block connected is safe and quick
- 单双极可供选择 Unipolar and bipolar can be choose
- 多种安装方式可供选择 Multiple installation methods to choose from



CW4L2-\*A-S(005)

产品特点  
FEATURE

- CW4-\*A-S(004) 螺丝固定单极滤波器 Unipolar filter by screw fixed
- CW4L2-\*A-S(005) 螺丝固定双极滤波器 Bipolar filter by screw fixed
- CW4L2-\*A-R1 侧面导轨固定双极滤波器 Bipolar filter by side guide rail
- CW4L2-\*A-S(004) 螺丝固定双极滤波器 Bipolar filter by screw fixed
- CW4L2-\*A-R 底部导轨固定双极滤波器 Bipolar filter by bottom guide rail

应用范围  
APPLICATION

- 电子电气设备 Electrical and Electronic Equipment
- 医疗设备 Medical Equipment
- 办公自动化设备 Office Automation Equipment
- 消费电子 Consumer Electronic Production
- 数据通讯设备 Data Communication
- 其他电源产品等 Other Power Production...

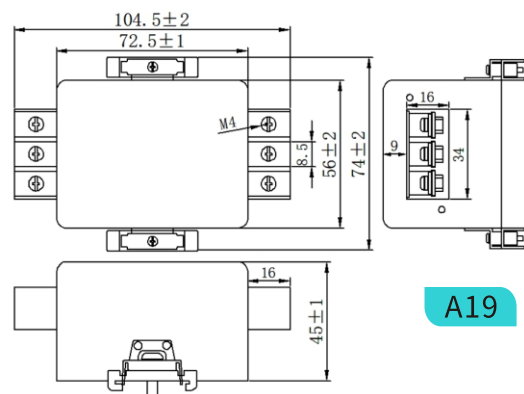
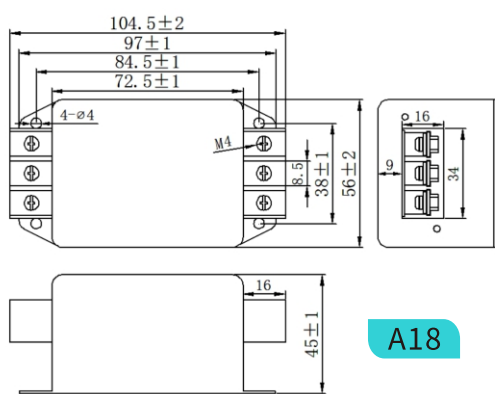
技术参数  
TECHNICAL DATA

- 额定电压 / Rated Voltage : 115/250V AC
- 工作频率 / Working Frequency : 50/60Hz
- 额定电流 / Rated Current : 1-30A
- 气候类型 / Climatic Category : 25/85/21
- 测试电压 / Working Frequency : 1500V DC(Line to Line) 2000V AC(Line to Ground)

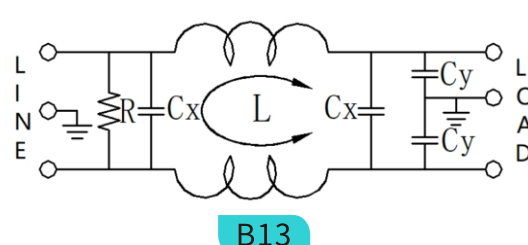
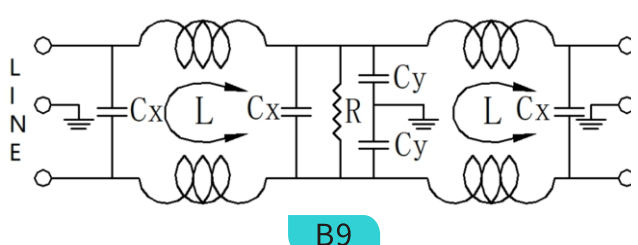
产品列表  
LIST

产品型号 Part No.	额定电流(A) Rate Current	泄露电流(mA) Leakage Current @250VAC 50Hz	电路图 Schematics	外形尺寸 Dimension	出线方式 Connection	安装方式 Installation	重量(g) Weigh	安规认证 Certification
CW4-*A-S(004)	3/6/10/20/30	<0.5	B13	A25		螺丝 Screw	234	RoHS CE CQC
CW4L2-*A-S(004)	3/6/10	<0.5	B9	A25		螺丝 Screw	204	RoHS CQC UL/UL CE
CW4L2-*A-S(005)	3/6/10/20/30	<0.5	B9	A18		螺丝 Screw	363	RoHS CQC UL/UL CE
CW4L2-*A-R1	3/6/10/20/30	<0.5	B9	A19		导轨 Rail	366	RoHS CQC UL/UL CE
CW4L2-*A-R	3/6/10/20/30	<0.5	B9	A37		导轨 Rail	363	RoHS CQC UL/UL CE

外形尺寸(mm)  
DIMENSION



电路图  
SCHEMATICS



专业电源滤波器制造商

Professional power filters from manufacturer