

产品介绍  
INTRODUCTION



CW4L3-\*A-R



CW4L3-\*A-S(003)



CW4L4-\*A-R



CW4L5-\*A-R

- 单相交流电源滤波器  
Single Phase AC Filters
- 含共模和差模线圈  
With common mode and differential mode coil
- 端子排连接安全快捷  
Terminal block connected is safe and quick
- 超高性能滤波器  
Ultra high performance filter
- 多种极数可供选择  
Multiple pole to choose from
- 多种安装方式可供选择  
Multiple installation methods to choose from

产品特点  
FEATURE

- CW4L3-\*A-S(003) 螺丝固定三极滤波器  
Three pole filter by screw fixed
- CW4L3-\*A-R 侧面导轨固定三极滤波器  
Three pole filter by side guide rail fixed
- CW4L4-\*A-R 螺丝固定四极滤波器  
Four pole filter by screw fixed
- CW4L5-\*A-R 螺丝固定五极滤波器  
Five pole filter by screw fixed

应用范围

APPLICATION

- 电子电气设备  
Electrical and Electronic Equipment
- 医疗设备  
Medical Equipment
- 办公自动化设备  
Office Automation Equipment
- 消费电子  
Consumer Electronic Production
- 数据通讯设备  
Data Communication
- 其他电源产品等  
Other Power Production...

技术参数

TECHNICAL DATA

- 额定电压 / Rated Voltage : 115/250V AC
- 工作频率 / Working Frequency : 50/60Hz
- 额定电流 / Rated Current : 1-30A
- 气候类型 / Climatic Category : 25/85/21
- 测试电压 / Working Frequency : 1500V DC(Line to Line) 2000V AC(Line to Ground)

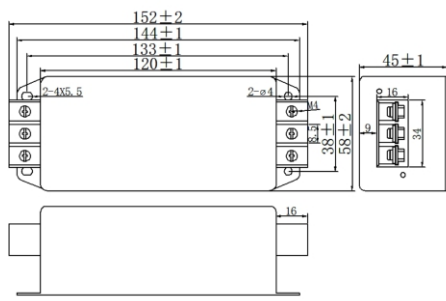
产品列表

LIST

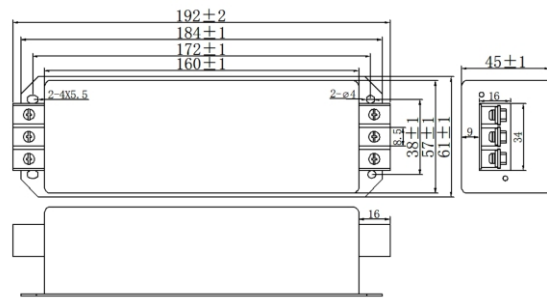
产品型号 Part No.	额定电流(A) Rate Current	泄露电流(mA) Leakage Current @250VAC 50Hz	电路图 Schematics	外形尺寸 Dimension	出线方式 Connection	安装方式 Installation	重量 (g) Weigh	安规认证 Certification
CW4L3-*A-R	3/6/10/20/30	<0.5	B16	A38		导轨 Rail	573	RoHS CE (CQC)
CW4L3-*A-S(003)	3/6/10/20/30	<0.5	B16	A31		螺丝 Screw	570	RoHS CE (CQC)
CW4L4-*A-R	3/6/10/20/30	<0.65	B20	A36		螺丝 Screw	863	RoHS CE (CQC)
CW4L5-*A-R	3/6/10/20/30	<0.65	B22	A40		螺丝 Screw	1300	RoHS CE (CQC)

外形尺寸(mm)

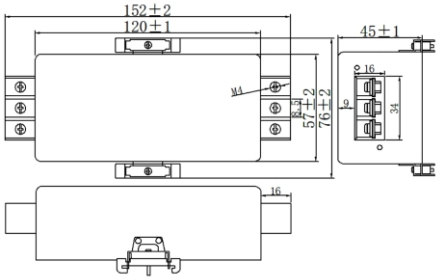
DIMENSION



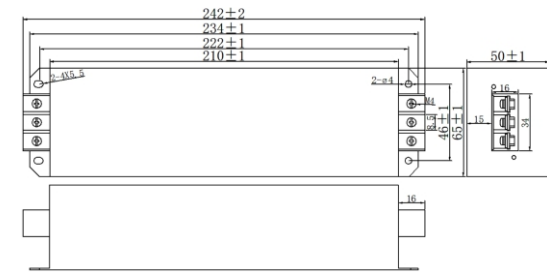
A31



A36



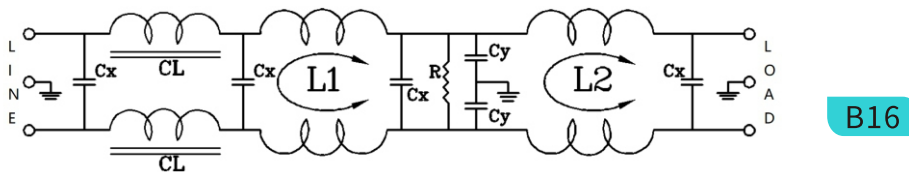
A38



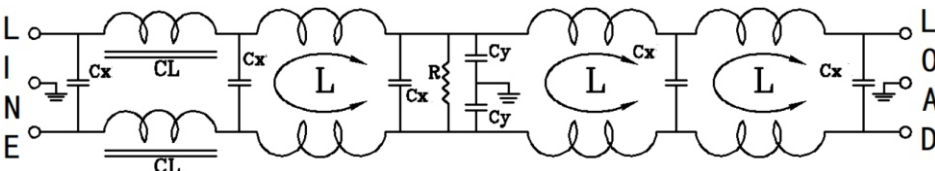
A40

电路图

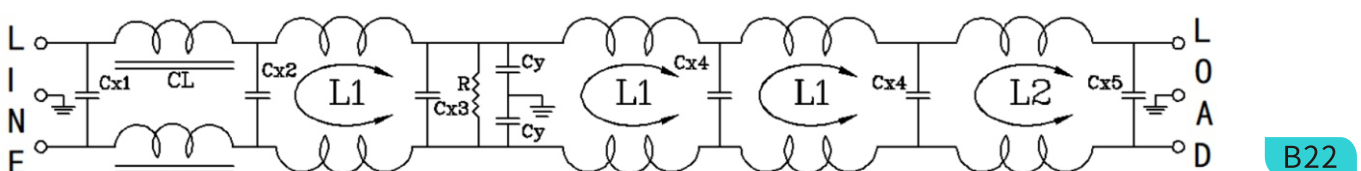
SCHEMATICS



B16



B20



B22

专业电源滤波器制造商

Professional power filters from manufacturer